



**CURVE TEE E RIDUZIONI**

TEES, BENDS AND REDUCERS  
T.STÜCKE, BOGEN UND REDUZIERSTÜCKE  
TÉS, COUDES ET RÉDUCTIONS  
TES, CODOS Y REDUCCIONES

## CURVE, TEE E RIDUZIONI

Tee, curve e riduzioni vengono ricavati da tubo elettrounito scordonato, le curve sono calibrate dopo la curvatura, al fine di ottenere una buona circolarità delle stesse. Sono successivamente intestate per ottenere una perfetta ortogonalità dei due piani.

**Tutti i materiali usati sono compatibili per il contatto con alimenti in accordo al Reg. (CE) n.1935/2004 - D.M. 21/03/1973 e FDA, 21 CFR.**

Finitura:

**NORMA DIN** – lucida **MR**

**NORMA SMS** – satinata **ST**

**NORMA ASTM** - microbigliata **SB**

## TEES, BENDS AND REDUCERS

The Tees and reducers are made from extrusion rolled tube, the bends are cauged after bending in order to obtain perfect roundness. The bends are then faced in order to obtain perfect squareness.

**All materials used are suitable for food contact according to the European Regulation (EC) No 1935/2004.**

Finish:

**DIN RULES** - polished **MR**

**SMS RULES** - satined **ST**

**ASTM RULES** - sandblasted **SB**

## T-STÜCKE, BOGEN UND REDUZIERSTÜCKE

“T” Stücke und Reduzierstücke werden aus gewalztem Rohr durch Spannung gebaut. Die Bögen werden nach der Biegung abgewägt, um eine bessere Rundheit zu erzielen. Später machen wir die Bezichtigung, um eine perfekte Rechtwinkligkeit zu haben.

**Alle verwendeten Materialien sind mit Kontakt mit Lebensmitteln vereinbar, in Übereinstimmung mit der europäischen Verordnung (EG) Nr 1935/2004.**

Fertigdrehen:

**DIN Standard** – glanzpoliert **MR**

**SMS Standard** – satiniert **ST**

**ASTM Standard** – sandgestrahlt **SB**

## TÉS, COUDES ET RÉDUCTIONS

Les Tés, les coudes et les réductions proviennent de tubes électro-unis sans cordon, les coudes sont calibrés après le cintrage afin d'obtenir un bonne circularité de ces derniers. Ensuite, ils sont aboutés afin que les deux plans soient parfaitement orthogonaux.

**Tous les matériaux utilisés sont compatibles avec le contact alimentaire conformément au règlement européen (CE) No 1935/2004.**

Finition:

**NORMA DIN** – polie **MR**

**NORMA SMS** – satinée **ST**

**NORMA ASTM** – microbillée **SB**

## TES, CODOS Y REDUCCIONES

Las tes, los codos y reducciones se obtienen de tubos electrosoldados sin costura, los codos son calibrados después del curvado para obtener una buena circularidad de los mismos. Sucesivamente se acoplan para obtener una perfecta ortogonalidad de los planos.

**Todos los materiales utilizados son compatibles para el contacto con alimentos según la normativa europea (CE) n. 1935/2004**

Acabado:

**NORMA DIN** – pulido **MR**

**NORMA SMS** – satinado **ST**

**NORMA ASTM** – con microbolas **SB**

## (✱) FINITURA / FINISH / METAL FINISH / FINITION / ACABADO



**MIRROR**



**SATIN**



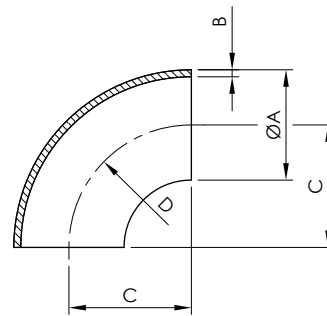
**SANDBLASTED**

## Curva a saldare 90° DIN

90° DIN welding bend  
 DIN 90° Schweißbogen  
 Coude 90° à souder DIN  
 Codo a soldar DIN 90°

art. 386

DN	A	B	C	D
10	12	1	26	26
15	18	1	35	35
20	22	1	40	40
25	28	1,5	50	50
32	34	1,5	55	55
40	40	1,5	60	60
50	52	1,5	70	70
65	70	2	80	80
80	85	2	90	90
100	104	2	100	100
125	129	2	185	185
150	154	2	215	215



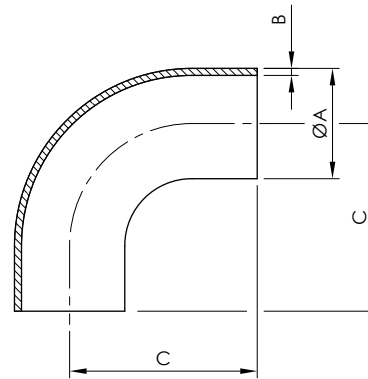
Ver. 04.18

## Curva 90° a mandrinare DIN

90° DIN expanding bend  
 DIN 90° Walzbogen  
 Coude 90° à dudgeonner DIN  
 Codo a mandrinar DIN 90°

art. 387

DN	A	B	C
15	18	1	47
20	22	1	52
25	28	1,5	70
32	34	1,5	78
40	40	1,5	85
50	52	1,5	97
65	70	2	110
80	85	2	123
100	101.6	2	140
100	104	2	140



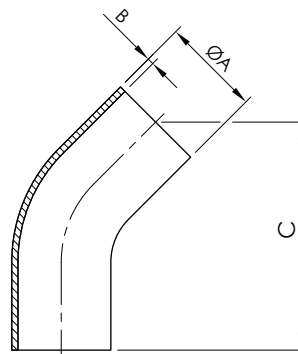
Ver. 04.18

## Curva 45° a mandrinare DIN

45° DIN expanding bend  
 DIN 45° Walzbogen  
 Coude 45° à dudgeonner DIN  
 Codo a mandrinar DIN 45°

art. 388

DN	A	B	C
15	18	1	60
20	22	1	65
25	28	1,5	73
32	34	1,5	83
40	40	1,5	89
50	52	1,5	103
65	70	2	108
80	85	2	120
100	101.6	2	151
100	104	2	151



### Curva 180° a saldare DIN

180° DIN welding bend

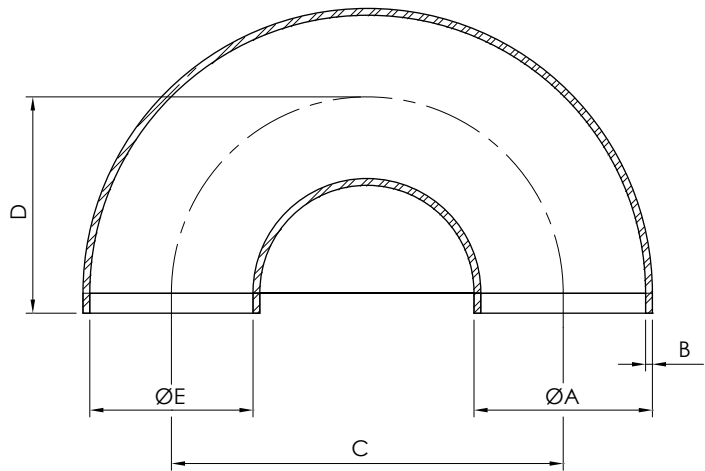
DIN 180° Bogen

Coude 180° à souder DIN

Codo soldar DIN 180°

 art. **388A**

DN	A	B	C	D	E
25	28	1.5	100	50	25
32	34	1.5	110	55	31
40	40	1.5	120	60	37
50	52	1.5	140	70	49
65	70	2	160	80	66
80	85	2	180	90	81
100	104	2	200	100	100



Ver. 04.18

### Deviatore a saldare DIN

Tee bend

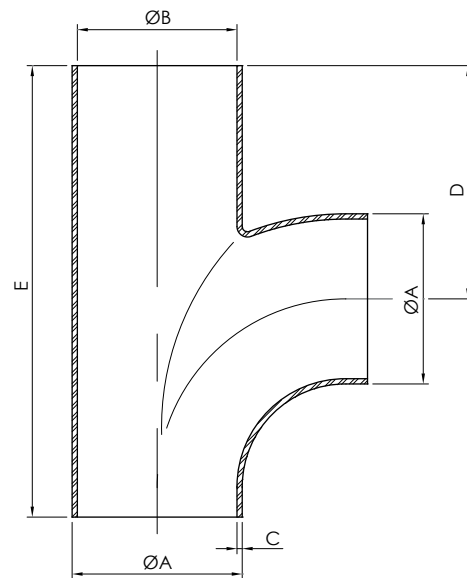
T-bogen

T+ coude a souder DIN

T+codo soldar DIN

 art. **388B**

DN	A	B	C	D	E
25	28	25	1.5	50	100
32	34	32	1.5	55	110
40	40	37	1.5	60	120
50	52	49	1.5	70	140
65	70	66	2	80	160
80	85	81	2	90	180
100	104	100	2	100	200



Ver. 04.18

### Doppia curva a saldare DIN

Double tee bend

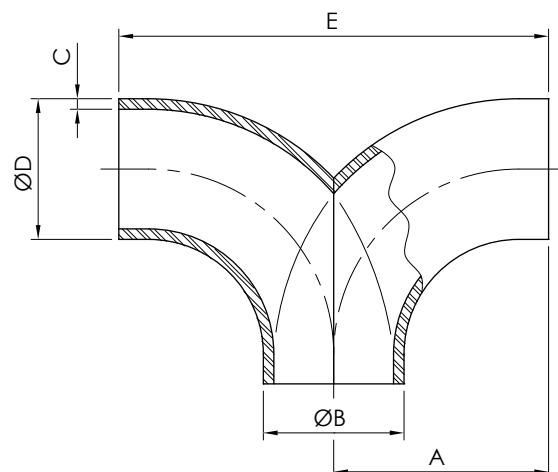
T-Doppelbogen

T-double coude a souder DIN

T-doble codo soldar DIN

 art. **388C**

DN	A	ØB	C	ØD	E
25	50	25	1.5	28	100
32	55	31	1.5	34	110
40	60	37	1.5	40	120
50	70	49	1.5	52	140
65	80	66	2	70	160
80	90	81	2	85	180
100	100	100	2	104	200

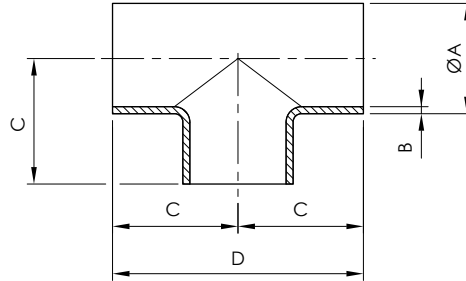


## TEE a saldare DIN

DIN welding tee  
Schweiß - T.Stück DIN  
Té à souder DIN  
Té soldar DIN

art. 389

DN	A	B	C	D
10	12	1	26	52
15	18	1.5	43	70
20	22	1.5	40	80
25	28	1.5	50	100
32	34	1.5	55	110
40	40	1.5	60	120
50	52	1.5	70	140
65	70	1.5	80	160
80	85	2	90	180
100	101.6	2	100	200
125	129	2	125	250
150	154	2	150	300



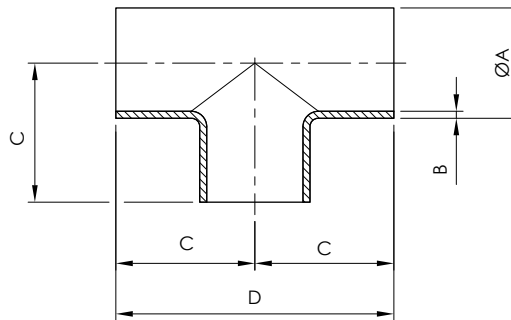
Ver. 04.18

## TEE a mandrinare DIN

DIN expanding tee  
Walz - T.Stück DIN  
Té à dudgeonner DIN  
Té mandrinar DIN

art. 390

DN	A	B	C	D
10	12	1	26	52
15	18	1.5	35	70
20	22	1.5	40	80
25	28	1.5	50	100
32	34	1.5	55	110
40	40	1.5	60	120
50	52	1.5	70	140
65	70	2	80	160
80	85	2	90	180
100	101.6	2	100	200
125	129	2	125	250
150	154	2	150	300



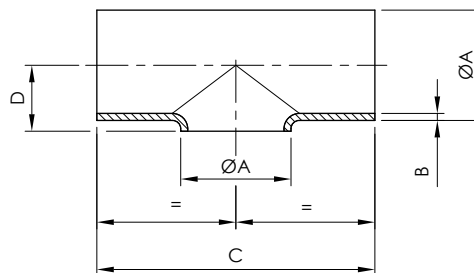
Ver. 04.18

## TEE corto a saldare

Welding short tee  
Schweiß -T.Stück, Kurz  
Té à souder court DIN  
Té soldar corto DIN

art. 390A

DN	A	B	C	D
10	12	1	26	9
15	18	1.5	35	12
20	22	1.5	40	14
25	28	1.5	50	17
32	34	1.5	55	20
40	40	1.5	60	23
50	52	1.5	70	29
65	70	2	80	38
80	85	2	90	45
100	101.6	2	100	54
125	129	2	125	68
150	154	2	150	80



**Riduzione concentrica a saldare DIN**

Concentric reducing socket DIN

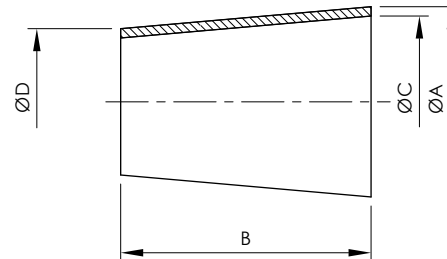
DIN Anschw. Reduzierstück

Réduction concentrique à souder DIN

Reduccion DIN concentrica

 art. **391**

DN	A	B	C	D
32/25	34	67	31	28
40/25	40	67	37	28
40/32	40	67	37	34
50/25	52	67	49	28
50/32	52	67	49	34
50/40	52	67	49	40
65/40	70	67	66	40
65/50	70	67	66	52
80/50	85	67	81	52
80/65	85	67	81	70
100/65	104	67	100	70
100/80	104	67	100	85
101/80	101.6	67	97.6	85



Ver. 04.18

**Riduzione eccentrica a saldare DIN**

Welding eccentric reducer DIN

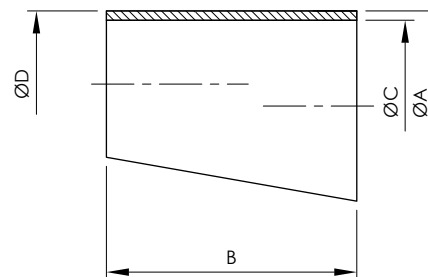
DIN Reduzierstück exz. SS

Réduction excentrique à souder DIN

Reduccion DIN excéntrica

 art. **392**

DN	A	B	C	D
32/25	34	67	31	28
40/25	40	67	37	28
40/32	40	67	37	34
50/25	52	67	49	28
50/32	52	67	49	34
50/40	52	67	49	40
65/40	70	67	66	40
65/50	70	67	66	52
80/50	85	67	81	52
80/65	85	67	81	70
100/65	104	67	100	70
100/80	104	67	100	85
101/80	101.6	67	97.6	85



## Riduzione concentrica a mandrinare DIN

Expanding concentric reducer DIN

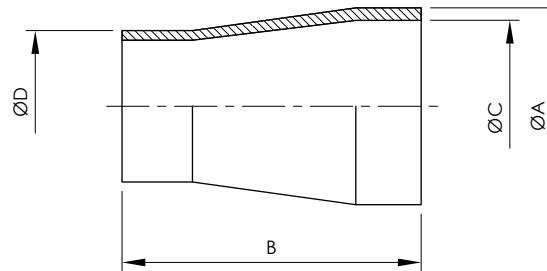
DIN Walz-Reduzierstück

Réduction concentrique à dudgeonner DIN

Reduccion mandrinar DIN concéntrica

art. **392A**

DN	A	B	C	D
32/25	34	80	31	28
40/25	40	102	37	28
40/32	40	88	37	34
50/25	52	115	49	28
50/32	52	129	49	34
50/40	52	113	49	40
65/40	70	117	66	40
65/50	70	135	66	52
80/50	85	120	81	52
80/65	85	120	81	70
100/65	104	127	100	70
100/80	104	120	100	85
101/80	101.6	120	97.6	85



Ver. 04.18

## Riduzione eccentrica a mandrinare DIN

Expanding eccentric reducer DIN

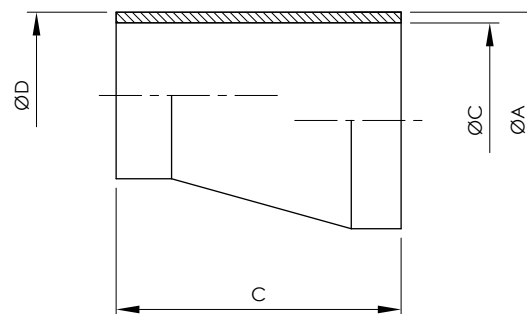
DIN Walz-Reduzierstück exz.

Réduction excentrique à dudgeonner DIN

Reduccion mandrinar DIN excéntrica

art. **392B**

DN	A	B	C	D
32/25	34	102	31	28
40/25	40	110	37	28
40/32	40	102	37	34
50/25	52	130	49	28
50/32	52	120	49	34
50/40	52	110	49	40
65/40	70	153	66	40
65/50	70	130	66	52
80/50	85	153	81	52
80/65	85	120	81	70
100/65	104	153	100	70
100/80	104	118	100	85
101/80	101.6	118	97.6	85

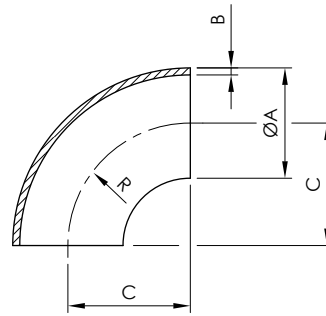


### Curva 90° a saldare SMS

90° SMS welding bend  
 SMS 90° Schweißbogen  
 Coude 90° à souder SMS  
 Codo a soldar SMS 90°

 art. **393**

DN	A	B	C	R
25	25.4	1.5	38	38
38	38.1	1.5	57	57
51	50.8	1.5	76	76
63	63.5	1.5	95	95
76	76.2	2	114	114
104	104	2	110	110



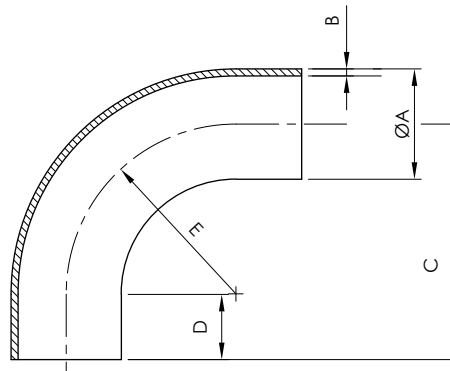
Ver. 04.18

### Curva 90° a saldare raggio 3D SMS

90° SMS 3D welding bend  
 SMS 90° Schweißbogen 3D  
 Coude 90° grand rayon 3D SMS  
 Codo a soldar 3D SMS 90°

 art. **394**

DN	A	B	C	D	E
25	25.4	1.5	68.1	30	38.1
38	38.1	1.5	87.2	30	57.2
51	50.8	1.5	106.2	30	76.2
63	63.5	1.5	124.5	30	94.5
76	76.2	2	144	30	114
104	104	2	130	30	100



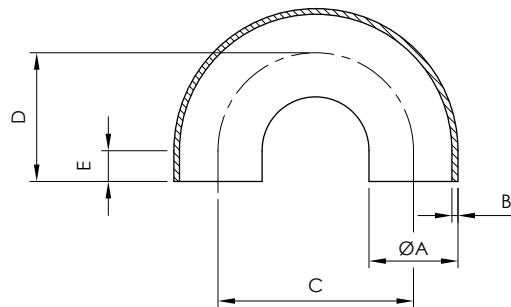
Ver. 04.18

### Curva 180° a saldare SMS

180° SMS welding bend  
 SMS 180° Schweißbogen  
 Coude 180° à souder SMS  
 Codo a soldar SMS 180°

 art. **395**

DN	A	B	C	D	E
25	25.4	1.5	81	75	22
38	38.1	1.5	104	90	35
51	50.8	1.5	143	100	47.5
63	63.5	1.5	168	115	60
76	76.2	2	171	130	72.2
104	104	2	220	150	100



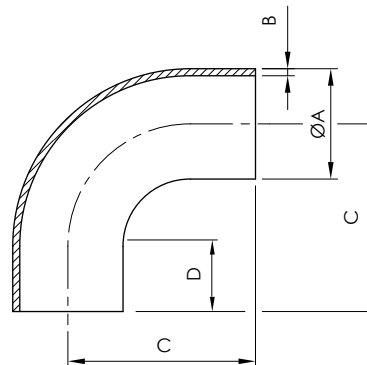
Ver. 04.18

### Curva 90° a mandrinare SMS

90° SMS expanding bend  
 SMS 90° Walzbogen  
 Coude 90° à dudgeonner SMS  
 Codo a mandrinar SMS 90°

 art. **396**

DN	A	B	C	D
25	25.4	1.5	55	30
38	38.1	1.5	70	32
51	50.8	1.5	82	31
63	63.5	1.5	105	41
76	76.2	2	110	34
101	104	2	140	40





## Curva 45° a mandrinare SMS

45° SMS expanding bend

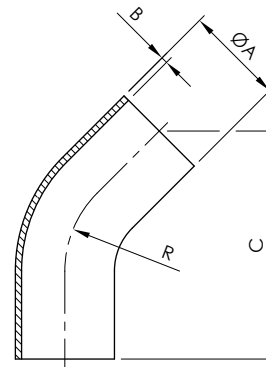
SMS 45° Walzbogen

Coude 45° à dudgeonner SMS

Codo a mandrinar SMS 45°

 art. **397**

DN	A	B	C	R
25	25.4	1.5	80	38
38	38.1	1.5	105	57
51	50.8	1.5	103	76
63	63.5	1.5	115	95
76	76.2	2	135	114
104	104	2	151	110



Ver. 04.18

## Tee a saldare SMS

SMS Welding tee

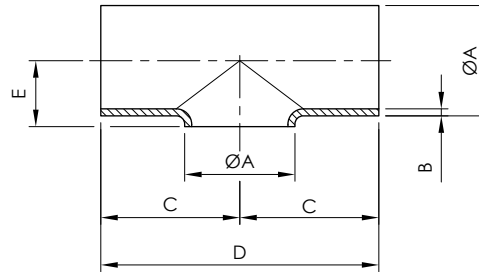
SMS Schweiß – T.Stück

Té à souder SMS

Té soldar SMS

 art. **398**

DN	A	B	C	D	E
25	25.4	1.5	55	110	15.5
38	38.1	1.5	70	140	22
51	50.8	1.5	82	164	28
63	63.5	1.5	105	210	35
76	76.2	2	110	220	41
101	101.6	2	150	300	54
104	104	2	150	300	55



Ver. 04.18

## Tee a mandrinare SMS

SMS Expanding tee

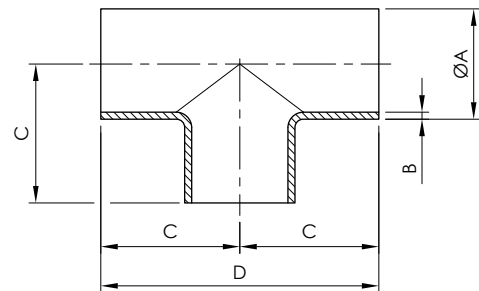
SMS Walz- T.Stück

Té à dudgeonner SMS

Té mandrinar SMS

 art. **399**

DN	A	B	C	D
25	25.4	1.5	55	110
38	38.1	1.5	70	140
51	50.8	1.5	82	164
63	63.5	1.5	105	210
76	76.2	2	110	220
104	104	2	150	300



Ver. 04.18

## Croce a mandrinare SMS

Cross piece to be expanded SMS

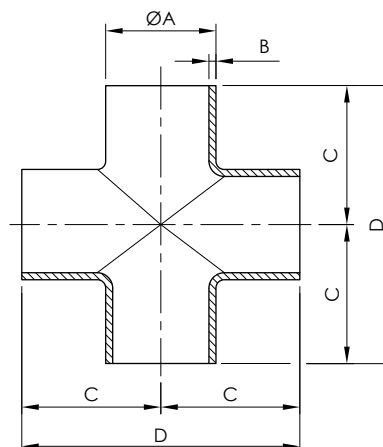
SMS Walz-Kreuzstück

Croix à dudgeonner SMS

Cruz mandrinar SMS

 art. **400**

DN	A	B	C	D
25	25.4	1.2	55	110
38	38.1	1.2	70	140
51	50.8	1.2	82	164
63	63.5	1.5	105	210
76	76.2	1.6	110	220
101	104	2	150	300



DN	A	B	C	D
38/25	38.1	67	35	25.4
51/25	50.8	67	47.5	25.4
51/38	50.8	67	47.5	38.1
63/38	63.5	67	60	38.1
63/51	63.5	67	60	50.8
76/38	76.2	67	72.2	38.1
76/51	76.2	67	72.2	50.8
76/63	76.2	67	72.2	63.5
101/63	101.6	67	97.6	63.5
101/76	101.6	67	97.6	76.2
104/76	104	67	100	76.2

## Riduzione concentrica a saldare SMS

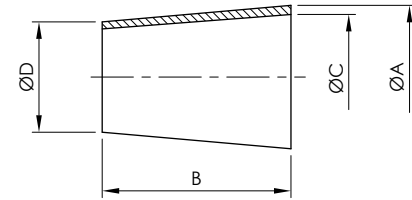
art. 401

Welding concentric reducing socket SMS

SMS Reduzierstück SS

Réduction concentrique à souder SMS

Reduccion concentrica SMS



Ver. 04.18

DN	A	B	C	D
38/25	38.1	67	35	25.4
51/25	50.8	67	47.5	25.4
51/38	50.8	67	47.5	38.1
63/38	63.5	67	60	38.1
63/51	63.5	67	60	50.8
76/38	76.2	67	72.2	38.1
76/51	76.2	67	72.2	50.8
76/63	76.2	67	72.2	63.5
101/63	101.6	67	97.6	63.5
101/76	101.6	67	97.6	76.2
104/76	104	67	100	76.2

## Riduzione eccentrica a saldare SMS

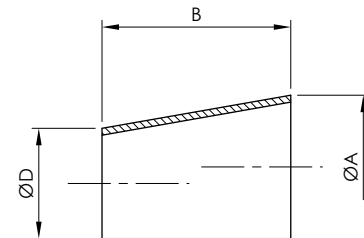
art. 402

Welding eccentric reducer SMS

SMS Reduzierstück exz

Réduction excentrique à souder

Reduccion SMS soldar excéntrica



Ver. 04.18

DN	A	B	C	D
38/25	38.1	97	35	25.4
51/25	50.8	115	47.5	25.4
51/38	50.8	97	47.5	38.1
63/38	63.5	115	60	38.1
63/51	63.5	97	60	50.8
76/38	76.2	132	72.2	38.1
76/51	76.2	115	72.2	50.8
76/63	76.2	97	72.2	63.5
101/63	101.6	120	97.6	63.5
101/76	101.6	120	97.6	76.2
104/76	104	120	100	76.2

## Riduzione a mandrinare SMS concentrica

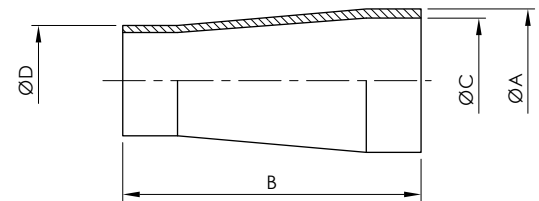
art. 403

Expanding concentric reducer SMS

SMS Walz-Reduzierstück

Réduction concentrique à dudgeonner SMS

Reduccion mandrinar SMS concéntrica



Ver. 04.18

DN	A	B	C	D
38/25	38.1	104	35	25.4
51/25	50.8	126	47.5	25.4
51/38	50.8	105	47.5	38.1
63/38	63.5	130	60	38.1
63/51	63.5	103	60	50.8
76/38	76.2	148	72.2	38.1
76/51	76.2	126	72.2	50.8
76/63	76.2	105	72.2	63.5
101/63	101.6	143	97.6	63.5
101/76	101.6	128	97.6	76.2
104/76	104	128	100	76.2

## Riduzione a mandrinare SMS eccentrica

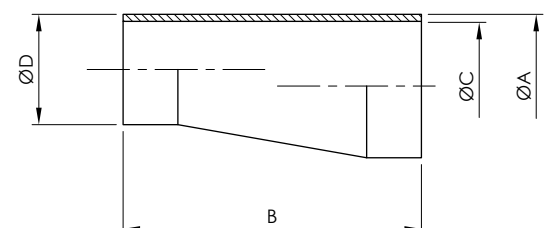
art. 404

Expanding eccentric reducer SMS

SMS Walz-Reduzierstück exz.

Réduction excentrique à dudgeonner SMS

Reduccion mandrinar SMS excéntrica



## Curve a 90° R = 1,5 D a saldare secondo norme ASTM 403

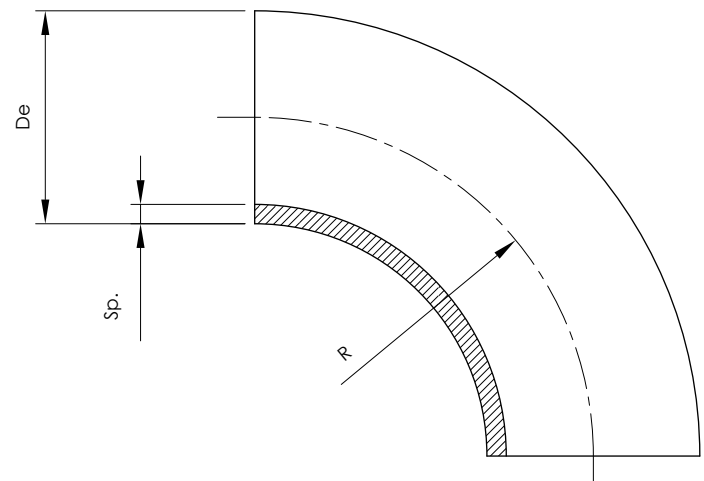
90° bends to be welded according to ASTM 403

Anzuschweissende 90° Bogen ASTM 403

Coudes 90° à souder ASTM 403

Codos 90° a soldar R = 1,5 D ASTM 403

DN ISO	GAS ASA	De	R	Sp.
8	1/4"	13.7	20	2
		14	20	1.5-2
10	3/8"	17.2	28.5	1.5-2
		18	27	1.5-2
		20	30	1.5-2
15	1/2"	21.3	31.8	1.5-2-2.5
		23	35	1.5
		25	38	1.5-2
20	3/4"	26.9	28.5	1.5-2-2.5
		30	45	1.5-2
		32	48	1.5-2
		33	49.5	1.5
25	1"	33.7	38	1.5-2-2.5-3
		35	52.5	1.5-2
32	1 1/4"	42.4	47.6	1.5-2-2.5-3
		43	64.5	1.5
		44.5	51	1.5-2
40	1 1/2"	48.3	57.1	1.5-2-2.5-3
		50	75	1.5-2
		53	75	1.5
		54	75	2
		57	77	2-3
50	2"	60.3	76.1	1.5-2-2.5-3
		73	95	1.5-2-3
75		76.1	96	1.5-2-2.5-3
		80	/	1.5-2-3
		84	126	2
80	3"	88.9	114.3	1.5-2-2.5-3
90	3 1/2"	101.6	133.5	2-3
		104	150	2
		108	142	/
100	4"	114.3	152.5	2-2.5-3
		129	188	2
125	5"	139.7	191	2-2.5-3
		154	225	2
150	6"	168.3	229	2-2.5-3
		204	300	2
200	8"	219.2	305	2-2.5-3



**TEE a saldare**

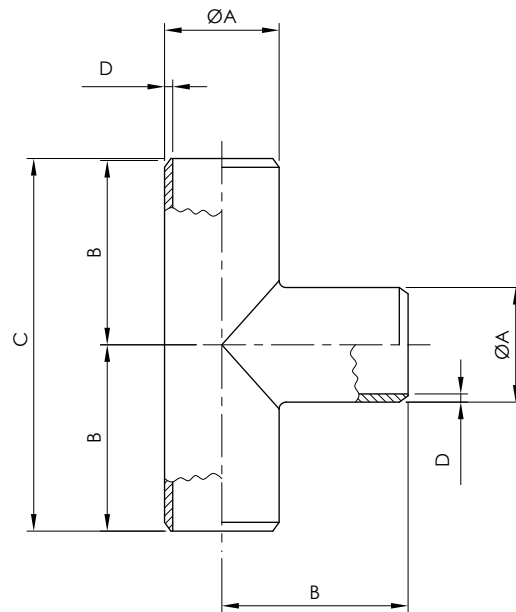
Welding tee

ISO Anschweiss T.Stück

Té à souder

Té soldar

DN	GAS	A	B	C	D
15	1/2"	21.3	25.4	50.8	2-3-4-5
20	3/4"	26.9	28.5	57	2-3-4-5
25	1"	33.7	38.1	76.2	2-3-4-5
32	1¼"	42.4	47.6	95.2	2-3-4-5
40	1½"	48.3	57.1	114.2	2-3-4-5
50	2"	60.3	63.5	127	2-3-4-5
65	2½"	76.1	76.2	152.4	3-4-5-6
80	3"	88.9	85.7	171.4	3-4-5-6
90	3½"	101.6	95.2	190.4	3-4-5-6
100	4"	114.3	104.7	209.4	3-4-5-6-7
125	5"	139.7	123.8	247.6	3-4-5-6-7
150	6"	168.3	142.8	285.6	3-4-5-6-7
200	8"	219.1	177.8	355.6	3-4-5-6-7
250	10"	273	215.9	431.8	3-4-5-6-7
300	12"	323.9	254	508	3-4-5-6-7
350	14"	355.6	279.4	558.8	3-4-5-6-7



Ver. 04.18

**Fondello bombato**

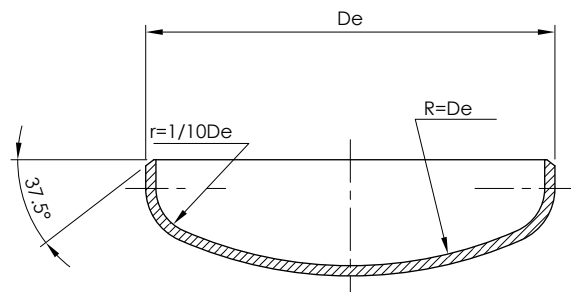
Convex bottom for tubes

Gewölbter Boden/ISO - Rohr

Fonds bombés

Fondo Abombado

DN-ISO	Gas-ASA	De	Sp
15	1/2"	21.3	1.5-2-2.5
20	3/4"	26.9	1.5-2-2.5-3
25	1"	33.7	1.5-2-2.5-3
32	1¼"	42.4	1.5-2-2.5-3
40	1½"	48.3	1.5-2-2.5-3
50	2"	60.3	2-2.5-3-3.5
65	2½"	76.1	2-2.5-3-3.5
80	3"	88.9	2-2.5-3-3.5
90	3½"	101.6	2-2.5-3-3.5
100	4"	114.3	2-2.5-3-3.5
125	5"	139.7	2-2.5-3-3.5-4
150	6"	168.3	2-2.5-3-3.5-4
200	8"	219.1	2.5-3-3.5-4-5

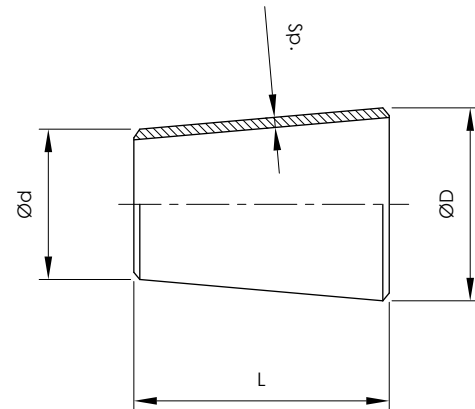


DN-GAS	Gas-ISO	ØD	Ød	L	Sp.
25x10	1"x3/8"	33.7	17.2	51	2-3
25x10	1"x1/2"	33.7	21.3	51	2-3
25x20	1"x3/4"	33.7	26.9	51	2-3
32x15	1¼"x1/2"	42.4	21.3	51	2-3
32x20	1¼"x3/4"	42.4	26.9	51	2-3
32x25	1¼"x1"	42.4	33.7	51	2-3
40x15	1½"x1/2"	48.3	21.3	64	2-3
40x20	1½"x3/4"	48.3	26.9	64	2-3
40x25	1½"x1"	48.3	33.7	64	2-3
40x32	1½"x1¼"	48.3	42.4	64	2-3
50x20	2"x3/4"	60.3	26.9	76	2-3
50x25	2"x1"	60.3	33.7	76	2-3
50x32	2"x1¼"	60.3	42.4	76	2-3
50x40	2"x1½"	60.3	48.3	76	2-3
65x25	2½"x1"	76.1	33.7	89	3-4
65x32	2½"x1¼"	76.1	42.4	89	3-4
65x40	2½"x1½"	76.1	48.3	89	3-4
65x50	2½"x2"	76.1	60.3	89	3-4
80x25	3"x1"	88.9	33.7	89	3-4
80x32	3"x1¼"	88.9	42.4	89	3-4
80x40	3"x1½"	88.9	48.3	89	3-4
80x50	3"x2"	88.9	60.3	89	3-4
80x65	3"x2½"	88.9	76.1	89	3-4
100x40	4"x1½"	114.3	48.3	102	3-4
100x50	4"x2"	114.3	60.3	102	3-4
100x65	4"x2½"	114.3	76.1	102	3-4
100x80	4"x3"	114.3	88.9	102	3-4
125x50	5"x2"	139.7	60.3	127	3-4
125x65	5"x2½"	139.7	76.1	127	3-4
125x80	5"x3"	139.7	88.9	127	3-4
125x100	5"x4"	139.7	114.3	127	3-4
150x50	6"x2"	168.3	60.3	140	3-4
150x65	6"x2½"	168.3	76.1	140	3-4
150x80	6"x3"	168.3	88.9	140	3-4
150x100	6"x4"	168.3	114.3	140	3-4
150x125	6"x5"	168.3	139.7	140	3-4
200x80	8"x3"	219.1	88.9	152	3-4
200x100	8"x4"	219.1	114.3	152	3-4
200x125	8"x5"	219.1	139.7	152	3-4
200x150	8"x6"	219.1	168.3	152	3-4

## Riduzioni concentriche

art. 408

Concentric reducer  
 Reduzierstück  
 Réduction concentrique  
 Reduccion a soldar

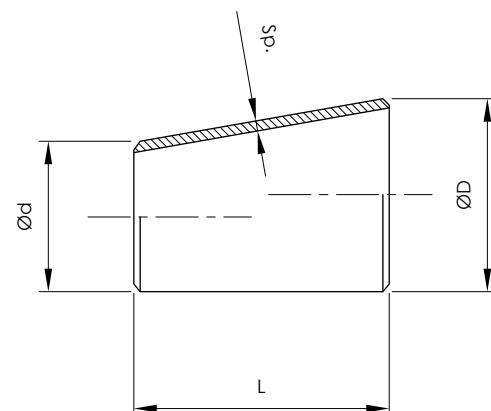


Ver. 04.18

## Riduzioni eccentriche

art. 409

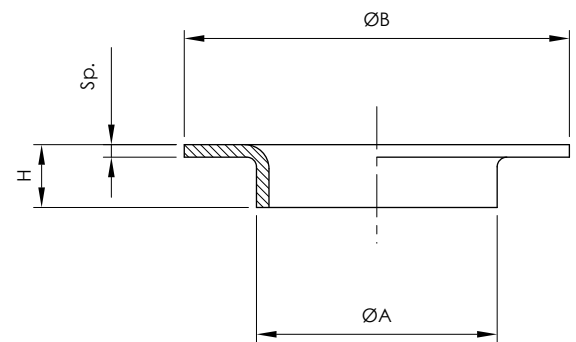
Eccentric reducer  
 Exz. Reduzierungstück  
 Réduction excentrique  
 Reduccion a soldar



DN-GAS	Gas-ISO	ØA	ØB	H	Sp.
-	-	20	45-40	6	1.5-2-2.5
<b>15</b>	1/2"	21.3	45	6	1.5-2-2.5
-	-	25	58-50	6	1.5-2-2.5
<b>20</b>	3/4"	26.9	58	6	1.5-2-2.5
-	-	30	68-60	8	1.5-2-2.5
<b>25</b>	1"	33.7	68	8	1.5-2-2.5
-	-	38	78-70	10	1.5-2-2.5
<b>32</b>	1"	42.4	78	10	1.5-2-2.5
-	-	44.5	88-80	10	1.5-2-2.5-3
<b>40</b>	1½"	48.3	88	10	1.5-2-2.5-3
-	-	57	102-90	12	2-2.5-3-3.5
<b>50</b>	2"	60.3	102	12	2-2.5-3-3.5
-	-	73	105	12	2-2.5-3-4
<b>65</b>	2½"	76.1	122	12	2-2.5-3-4
<b>80</b>	3"	88.9	138	12	2-2.5-3-4
<b>90</b>	3½"	101.6	139.7	12	2-2.5-3-4
-	-	108	158-149	12	2-2.5-3-4
<b>100</b>	4"	114.3	158	12	2-2.5-3-4
-	-	133	188-178	14	2-2.5-3-4
<b>125</b>	-	139.7	188	14	2-2.5-3-4
-	5"	141.3	185.7	14	2-2.5-3-4
-	-	159	212-202	16	2-2.5-3-4
<b>150</b>	6"	168.3	212	16	2-2.5-3-4
<b>175</b>	-	193.7	232-242	18	2-2.5-3-4
<b>200</b>	8"	219.1	268	18	2.5-3-4
-	-	267	320-312	20	2.5-3-4
<b>250</b>	10"	273	320	20	2.5-3-4
<b>300</b>	12"	323.8	370	20	3-4-5
<b>350</b>	14"	355.6	430	25	3-4-5
-	-	368	430	25	3-4-5
<b>400</b>	16"	406.4	482	25	3-4-5
-	-	419	482-490	25	3-4-5
<b>450</b>	18"	457.2	520	25	3-4-5
-	-	470	532	25	3-4-5
<b>500</b>	20"	508	570	25	3-4-5
-	-	521	585	25	3-4-5
<b>550</b>	22"	558.8	635	25	3-4-5
-	-	572	635	25	3-4-5
<b>600</b>	24"	609.6	692	25	3-4-5
-	-	622	685	25	3-4-5

## Bordi d'appoggio cartelle art. 410

Collars  
 Ünterstützungskragen  
 Collettere enboutie  
 Arandela

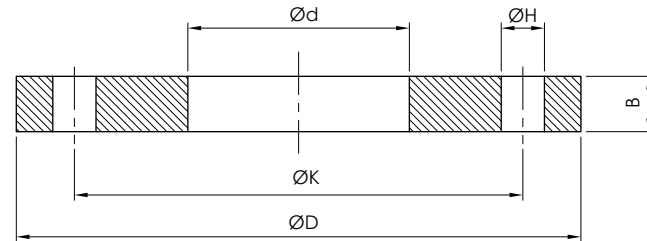


**Flangia ASTM A182 EN 1092-1 01A PN6**

art. 419

 Flange ASTM A182 EN 1092-1 01A PN6  
 Flansch ASTM A182 EN 1092-1 01A PN6  
 Bride ronde ASTM A182 EN 1092-1 01A PN6  
 Brida ASTM A182 EN 1092-1 01A PN6

DN	ØD	ØK	Ød	B	ØH	N. FORI HOLES
10	75	50	18	12	11	4
15	80	55	22	12	11	4
20	90	65	27,5	14	11	4
25	100	75	34,5	14	11	4
32	120	90	43,5	16	14	4
40	130	100	49,5	16	14	4
50	140	110	61,5	16	14	4
65	160	130	77,5	16	14	4
80	190	150	90,5	18	18	4
100	210	170	116	18	18	4
125	240	200	141,5	20	18	8
150	265	225	170,5	20	18	8


 Flangia piana **forgiata** AISI 304/316  
 Flat flange **forged** AISI 304/316  
 Flachflansch **geschmiedet** AISI 304/316  
 Bride plate **forgée** AISI 304/316  
 Brida plana **forjada** AISI 304/316

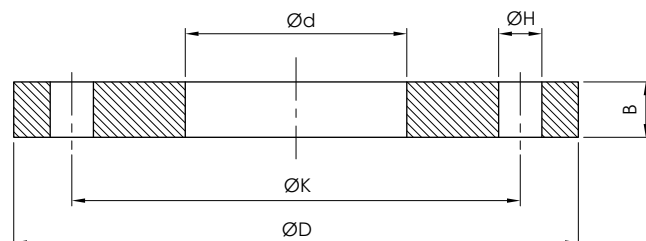
Ver. 04.18

**Flangia ASTM A182 EN 1092-1 01A PN10**

art. 420

 Flange ASTM A182 EN 1092-1 01A PN10  
 Flansch ASTM A182 EN 1092-1 01A PN10  
 Bride ronde ASTM A182 EN 1092-1 01A PN10  
 Brida ASTM A182 EN 1092-1 01A PN10

DN	ØD	ØK	Ød	B	ØH	N. FORI HOLES
10	90	60	18	14	14	4
15	95	65	22	14	14	4
20	105	75	27,5	16	14	4
25	115	85	34,5	16	14	4
32	140	100	43,5	18	18	4
40	150	110	49,5	18	18	4
50	165	125	51,5	20	18	4
65	185	145	77,5	20	18	4/8
80	200	160	90,5	20	18	8
100	220	180	116	22	18	8
125	250	210	141,5	22	18	8
150	285	240	170,5	24	22	8

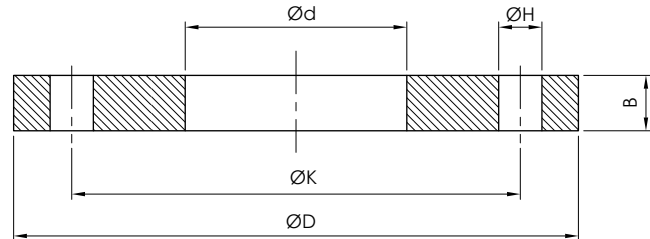

 Flangia piana **forgiata** AISI 304/316  
 Flat flange **forged** AISI 304/316  
 Flachflansch **geschmiedet** AISI 304/316  
 Bride plate **forgée** AISI 304/316  
 Brida plana **forjada** AISI 304/316

**Flangia ASTM A182 EN 1092-1 01A PN6 spess. ridotto**

 art. **421**

Flange ASTM A182 EN 1092-1 01A PN6 reduced thickness  
 Flansch ASTM A182 EN 1092-1 01A PN6 reduzierte Dicke  
 Bride ronde ASTM A182 EN 1092-1 01A PN6 épaisseur réduite  
 Brida ASTM A182 EN 1092-1 01A PN6 espesor reducido

DN	ØD	ØK	Ød	B	ØH	N. FORI HOLES
10	75	50	18	8	11	4
15	80	55	22	8	11	4
20	90	65	27,5	8	11	4
25	100	75	34,5	8	11	4
32	120	90	43,5	8	14	4
40	130	100	49,5	10	14	4
50	140	110	61,5	10	14	4
65	160	130	77,5	12	14	4
80	190	150	90,5	12	18	4
100	210	170	116	12	18	4
125	240	200	141,5	14	18	8
150	265	225	170,5	14	18	8



Flangia piana **forgiata** AISI 304/316  
 Flat flange **forged** AISI 304/316  
 Flachflansch **geschmiedet** AISI 304/316  
 Bride plate **forgée** AISI 304/316  
 Brida plana **forjada** AISI 304/316

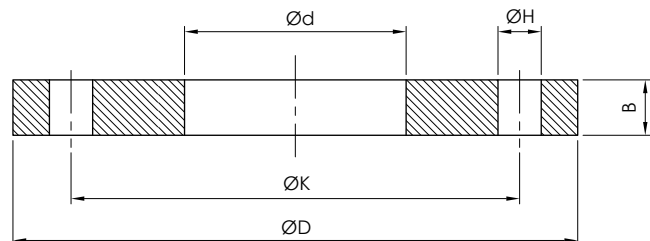
Ver. 04.18

**Flangia ASTM A182 EN 1092-1 01A PN10 spess. ridotto**

 art. **422**

Flange ASTM A182 EN 1092-1 01A PN10 reduced thickness  
 Flansch ASTM A182 EN 1092-1 01A PN10 reduzierte Dicke  
 Bride ronde ASTM A182 EN 1092-1 01A PN10 épaisseur réduite  
 Brida ASTM A182 EN 1092-1 01A PN10 espesor reducido

DN	ØD	ØK	Ød	B	ØH	N. FORI HOLES
10	90	60	18	8	14	4
15	95	65	22	8	14	4
20	105	75	27,5	8	14	4
25	115	85	34,5	8	14	4
32	140	100	43,5	8	18	4
40	150	110	49,5	10	18	4
50	165	125	51,5	10	18	4
65	185	145	77,5	12	18	4/8
80	200	160	90,5	12	18	8
100	220	180	116	12	18	8
125	250	210	141,5	14	18	8
150	285	240	170,5	14	22	8



Flangia piana **forgiata** AISI 304/316  
 Flat flange **forged** AISI 304/316  
 Flachflansch **geschmiedet** AISI 304/316  
 Bride plate **forgée** AISI 304/316  
 Brida plana **forjada** AISI 304/316



