



VENETA ACCIAI s.r.l.
lavorazione e commercio acciai inossidabili

Uffici e Stabilimento:
30020 FOSSALTA DI PIAVE (ve) – Via delle Industrie, 9
tel. 0421/679996 r.a. – fax 0421/679470
cap. soc. i.v. € 100.000 c.f. 00342420262 – p.i. 02972820274
www.venetaacciai.it e-mail: info@venetaacciai.it

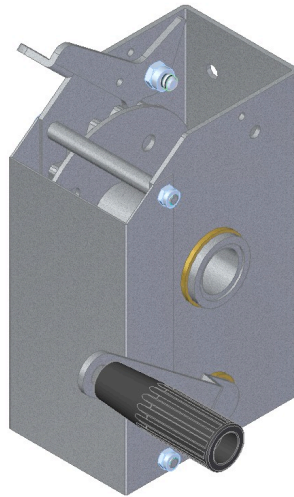
MANUALE USO E MANUTENZIONE

USE AND MAINTENANCE MANUAL

SISTEMA CERTIFICATO
Certified System
UNI EN ISO 9001 :2008



WINCH ART. 443H



1 PRELIMINARY WARNING

- Upon receiving the product, check that the package is intact. Make sure that it has been delivered in good condition and that the material meets the purchase order specifications.

2 INSTALLATION

- Mount the winch through the four holes in the external housing. The crank handle must be on the lower right side.
- Make sure that you mount the winch to a sufficiently strong and rigid wall, and that the fixing screws are firmly tightened.
- Block the free end of the metallic rope to the winch shaft through the dedicated hole. Wind the rope by turning the crank handle counter-clockwise. Upon winding, make sure that the coil does not exceed the diameter of the shoulders in which it is fitted.
- This stainless-steel winch can be installed in any food environment and any other environment where corrosion-resistant equipment is required.

3 COMMISSIONING

- There is no legal requirement to test the winch prior to commissioning.
- The installation technician is responsible for selecting the rope that best suits any specific task.

4 USE

- The winch has a maximum pulling capacity of 50 kg.
- The winch can be used to tow. The towing capacity varies according to the task.
- Exceeding the maximum capacity can cause the winch or its parts to permanently deform or break, and may result in severe injuries to persons and the pulled load.
- The winch is equipped with a safety lever that prevents the load from falling in case of accidental release of the crank handle.
- It is possible to override the safety lever by pushing it upwards with your fingers. This allows the crank handle to rotate in the opposite direction.
Warning. This is a very dangerous operation: the winch moves freely when a load is being pulled.

5 USER CHECKS AND MAINTENANCE

- The user must conduct periodic inspections of the winch components and the pulling rope.
- The user must ensure, in particular, that the safety lever spring works properly.
- Maintenance or alteration by third parties is strictly forbidden unless authorized by the manufacturer. Any repair or part replacement by parties other than the manufacturer will render the warranty null and void and the manufacturer won't accept any responsibility.
- The capstans do not need lubrication.

6 SAFETY

- Do not leave a weight hanging by the winch.
- Never take out the winch cover. When operating the winch, the internal capstans can cause hand/fingers injuries.
- Make sure there are no persons in the vicinity of the load that is being lifted.
- Wearing working gloves is recommended when operating the winch and the safety lever.

7 TRANSPORT

- The winches are normally shipped in their own package.
- There are no special provisions for transport and handling of small-sized winches.
- The packaging material must be recycled or disposed of in accordance with all applicable laws on waste in the country of destination.

WARRANTY

- All winches manufactured by Veneta Acciai are covered by a 24-month-warranty from the date of supply and only so long as the user complies with the terms of use set forth herein.
- Any part that the manufacturer considers faulty will be replaced by Veneta Acciai at no cost (ex works).
- If a shipment does not meet the purchase order specifications, claims must be submitted in writing to Veneta Acciai within 10 days of receipt.
- Any reparation or part replacement by any parties other than the manufacturer will render the warranty null and void and the manufacturer won't accept any responsibility.

Veneta Acciai srl